

# PACIFIC NORTHWEST NURSERY IPM



**Oregon State**

**Pest Activity Alerts On Twitter @PNWNurseryIPM**

## Insects



© Robin Roseetta, Oregon State University

### More Great Resources

<a href="#">Home</a>	<a href="#">Insects</a>	<a href="#">Mites</a>	<a href="#">Diseases</a>
<a href="#">Weeds</a>	<a href="#">Vertebrates</a>	<a href="#">Slugs/Snails</a>	<a href="#">Abiotic</a>

[Contents: By Damage and Image](#)

[In progress](#)

Contents: Alphabetical  
[A](#) [B](#) [C](#) [D](#) [E](#) [F](#) [G](#) [H](#) [I](#) [J](#) [K](#) [L](#)  
[M](#) [N](#)  
[O](#) [P](#) [Q](#) [R](#) [S](#) [T](#) [U](#) [V](#) [W](#) [X](#) [Y](#) [Z](#)

- [alder flea beetle](#)
- [aphid management](#)
- [apple and thorn skeletonizer](#)
- [apple ermine moth](#)
- [ash whitefly](#)
- [azalea bark scale](#)
- [azalea lace bug](#)
- [azalea sawfly](#)
- [Bagrada bug](#)
- [bark lice](#)
- [Barypeithes root weevil](#)
- [Beneficial nematodes](#)
- [biocontrol of root weevils](#)
- [birch aphid](#)

### Roseslug

There are several sawfly species that feed on roses. The common roseslug, *Endelomyia aethiops*, can be found skeletonizing rose leaves in late spring and early summer. This species, along with the bristly roseslug, *Cladius difformis*, belong to the family Tenthredinidae. The larvae look similar to caterpillars but are actually more closely related to bees and wasps. The common roseslug is pale green with a light tan head capsule. The bristly roseslug has many hairlike bristles. Along with three pairs of true legs, they have three pairs of abdominal legs which lack the hooked crochets on the prolegs of true caterpillars. The adult sawflies are small, thick-waisted wasps, mostly black in color.

### Damage

Initial feeding damage is usually found in May or June in the PNW and consists of tiny areas of clear tissue. With time, the roseslug feeding creates a distinctive

### Gallery

Roseslug larva under rose leaf



© Robin Roseetta, Oregon State University

[black bean aphid](#)  
[black cherry aphids](#)  
[black stem borer](#)  
[bluegum psyllid](#)  
[Boisduval scale](#)  
[borers](#)  
[branch and twig borer](#)  
[brown marmorated stink bug](#)  
[bronze birch borer](#)  
[boxwood leafminer](#)  
[boxwood psyllid](#)  
[bulb flies](#)  
[cabbage whitefly](#)  
[carnation tortrix](#)  
[carpet beetle \(images\)](#)  
[Calligraph californica](#)  
[caterpillars](#)  
[Ceanothus stem gall moth](#)  
[cereal leaf beetle](#)  
[cherry ermine moth](#)  
[chilli thrips](#)  
[cinnabar moth](#)  
[clay colored weevil](#)  
[cottony camellia scale](#)  
[cutworm](#)  
[crane flies](#)  
[cypress tip moth](#)  
[dogwood sawfly](#)  
[Douglas fir sawfly](#)  
[Douglas fir twig weevil](#)  
[dustywings](#)  
[earwigs](#)  
[elm leafminer](#)  
[European pine sawfly \*\*new\*\*](#)  
[European pine shoot moth](#)  
[European wool carder bee](#)  
[emerald ash borer](#)  
[Fall webworm](#)  
[fir coneworm \*\*new\*\*](#)  
[flatheaded cedar borer](#)  
[ground beetle gallery](#)  
[Hemerocallis gall midge](#)  
**new**  
[hollyhock weevil](#)  
[hoverflies](#)  
[honeylocust plant bug](#)  
[honeylocust pod gall midge](#)  
[Heliothis phloxiphaga](#)  
[holly bud moth](#)  
[huckleberry root aphids](#)  
[ground mealybug](#)  
[Japanese beetle](#)  
[lacebugs](#)

**windowpanelike damage.** The larvae feed on the underside of the leaves.

#### Management

Cultural control includes hand picking and disposing of infested leaves. There are a range of chemical control options including biorationals such as insecticidal soaps and horticultural oils. Direct contact is necessary. Products such as Conserve or Entrust (OMRI or organic formulation) with spinosad have good activity on sawflies (bee warning). For landscape applications (no nursery label), Acelepryn has give activity and less risk to pollinators. Although they look like caterpillars, they are not affected by Bt sprays as are the larvae of moths and butterflies. Pay attention to bee safety when affected roses are in flower.

#### Links:

Sacramento Rose Society: [Rose sawflies](#). There are great images and information on the different types of rose sawflies found in Northern California and Oregon.

UC Irvine, [Bristly roseslug, \*Cladius difformis\*](#). Wonderful images of bristly roseslug sawflies, particularly adults at this website.

Images of the adult roseslug can be found at the [Biodiversity Database of Washington DC website](#).

Original publication: 6/3/2009  
 Latest publication: 5/6/2016

Author: R.L. Rosetta, Extension Nursery Integrated Pest Management, Department of Horticulture, Oregon State University

Early roseslug feeding damage



Leaf skeletonizing damage caused by roseslug feeding



Roseslug pupa



Photo: Ken Gray

Bristly roseslug larva



Photo: Ken Gray

[lacewings](#)  
[lady beetle gallery](#)  
[leaf weevil](#)  
[light brown apple moth](#)  
[Linden aphid](#) new  
[lupine aphid](#) new  
[Macrosiphum rhamni](#) new  
[maple aphids](#)  
[maple tip moth](#)  
[maple midge](#)  
[March flies](#)  
[mountain ash sawfly](#)  
[Myzocallis sp. on red oak](#)  
 new  
[Narcissus bulb fly](#)  
[natural enemies gallery](#)  
[oak ambrosia beetle](#)  
[oak slug](#)  
[oak twig gall wasp](#)  
[obscure root weevil](#)  
[Pacific flatheaded borer](#)  
[peach tree borer](#)  
[peach twig borer](#)  
[pear blight beetle](#)  
[pear psylla](#)  
[pear leaf-curling midge](#)  
[pear sawfly](#)  
[pine needle scale](#)  
[pine and cone spittlebug](#)  
[poplar and willow borer](#)  
[Psyllopsis fraxinicola](#)  
[rose curculio weevil](#)  
[rose midge](#)  
[roseslug](#)  
[rove beetle gallery](#)  
[rose stem girdler](#)  
[sawflies](#)  
[scale](#)  
[sequoia pitch moth](#)  
[soldier beetle gallery](#)  
[snapdragon plume moth](#)  
 new  
[snakefly gallery](#)  
[speckled green fruitworm](#)  
[meadow spittlebug](#)  
[spotted asparagus beetle](#)  
[spruce twig aphid](#)  
[tent caterpillars](#)  
[thrips](#)  
[viburnum leaf beetle](#)  
[violet gall midge](#)  
[western poplar clearwing](#)  
[western spotted cucumber beetle](#)

### Bristly roseslug cocoon

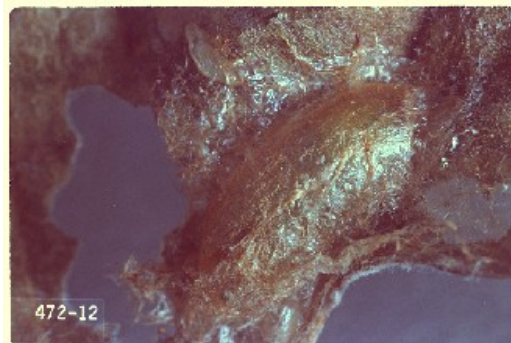


Photo: Ken Gray

### Bristly roseslug adult



Photo: Ken Gray

[white pine weevil](#)

[whiteflies](#)

[woolly alder aphid](#) **new**

[woolly ash aphid](#)

[woolly beech aphid](#)

[Back to Home](#)

[Contact Us](#)

**Website editor:  
Robin Rosetta**

Page last modified 5/6/16

Before applying any of the information found on this site, please read our [disclaimer](#).

Copyright © 2019, All Rights Reserved

*Oregon State University Extension Service prohibits discrimination in all its programs, services, activities, and materials on the basis of race, color, national origin, religion, sex, gender identity (including gender expression), sexual orientation, disability, age, marital status, familial/parental status, income derived from a public assistance program, political beliefs, genetic information, veteran's status, reprisal or retaliation for prior civil rights activity.*

*El Servicio de Extensión de Oregon State University prohíbe la discriminación en todos sus programas, servicios, actividades y materiales en base a la raza, color, origen nacional, religión, sexo, identidad de género (incluyendo la expresión de género), orientación sexual, discapacidad, edad, estado civil, estatus de la familia/padres, ingresos derivados de un programa de asistencia pública, creencias políticas, información genética, estado de veterano, represalia o represalia por actividad previa de los derechos civiles.*